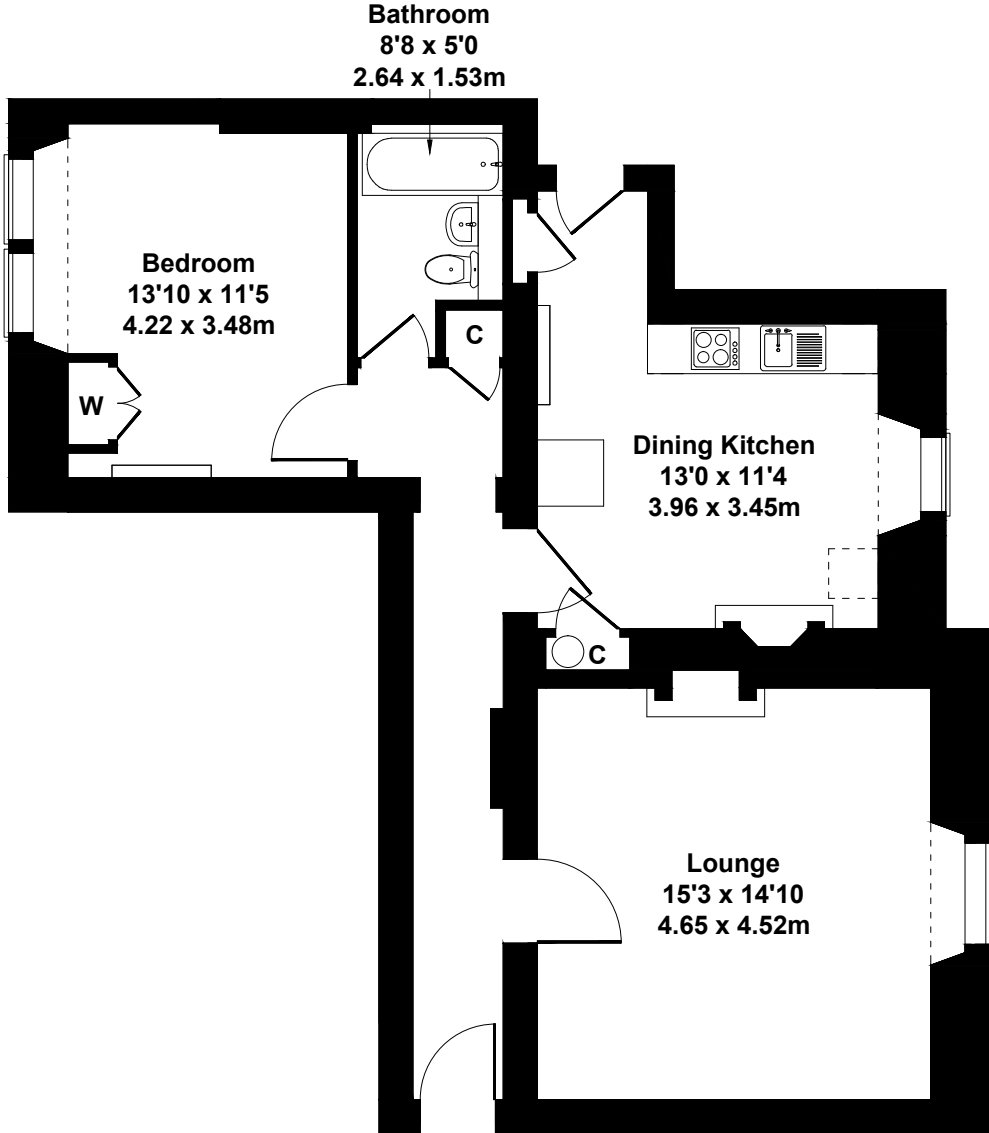


Flat 3, 601 Tollcross Road, Glasgow G32 8TF

Approximate Gross Internal Area
829 sq ft - 77 sq m



GROUND FLOOR

SKETCH PLAN FOR ILLUSTRATIVE PURPOSES ONLY

All measurements walls, doors, windows, fittings and appliances, their sizes and locations, are approximate only. They cannot be regarded as being a representation by the seller, nor their agent.